

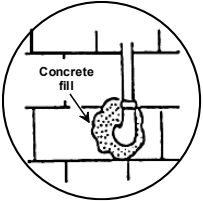
Bee-Proofing Your Property

Homeowners should periodically inspect their property for potential AHB colonies.

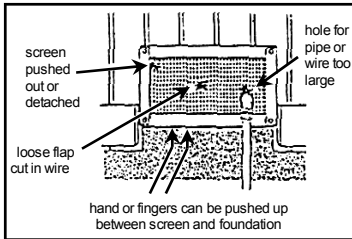
Building maintenance

AHBs can enter and establish a colony inside any small exterior openings of a house. A homeowner can reduce AHB colonies by:

- ✓ sealing any opening larger than 1/8 inch, such as pipe entrances on walls and where stucco meets brick or wood.



- ✓ repairing or replacing damaged vent screens on foundation and eaves.



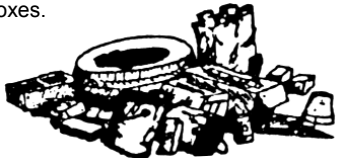
Yard maintenance

AHBs can build colonies on any structure or plant in a yard. A homeowner can reduce AHB colonies and make these sites more visible by:

- ✓ trimming overgrown shrubs and trees.



- ✓ removing empty containers and trash, especially tires and boxes.



- ✓ filling in ground holes.



If You Discover a Swarm or Colony of Bees

AVOID THE AREA

Keep children and pets away from a swarm or colony.

NOTIFY

A professional beekeeper or pest control company.

If You Are Attacked by Bees

LEAVE AREA QUICKLY

Attack could last until victim vacates the area.

COVER FACE

Use clothes to cover eyes and mouth from bees.

SEEK SHELTER

Go inside enclosures where bees cannot enter such as a car, house, or other building. **Call 911.**

First Aid For Bee Stings

For any bee sting:

- ⇒ Remove stinger quickly by scraping with a fingernail or edge of a dull thin object.

For **allergic reactions**:

- ⇒ Seek professional medical care as soon as possible.

- ⇒ Watch for breathing difficulties.

For **multiple stings or hypersensitive individuals**:

- ⇒ Immediately get professional medical care.

- ⇒ Do not wait for symptoms to develop.

For more information call:

**MOSQUITO and VECTOR
MANAGEMENT DISTRICT**
of Santa Barbara County
OFFICE: 2450 Lillie Ave. * MAIL: P.O. Box 1389
Summerland, CA 93067
TELEPHONE: (805) 969-5050
E-MAIL: mvmdistrict@mvmdistrict.org
Visit our WEBSITE: www.mvmdistrict.org

PREPARING FOR AFRICANIZED HONEY BEES

ALIAS "KILLER BEES"



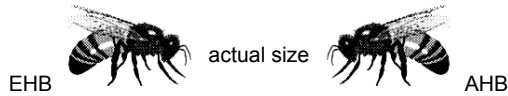
Actual size



**MOSQUITO and VECTOR
MANAGEMENT DISTRICT**
of Santa Barbara County

General Information

The Africanized Honey Bee (AHB) has migrated into California. The first AHB swarms were found at the southern border of California in October 1993. AHBs are predicted to continue moving northward into other areas of California that domestic European Honey Bees (EHB) now inhabit. It is expected that AHBs will eventually replace unmanaged EHBs.

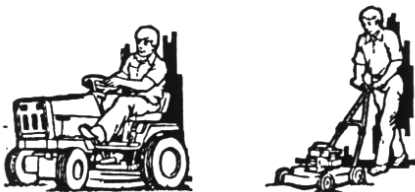


AHBs look the same and in most ways behave like the EHBs that currently reside in the United States. One very important difference between the two varieties is the ultra defensive behavior AHBs can display while protecting their colony. In some attacks, AHBs have seriously stung or killed pets, livestock, and humans. This behavior has earned AHBs the common name "Killer Bees."

Activities That Can Cause a Stinging Attack

AHBs react to activities farther from the colony than EHBs.

Vibration or noise



Operation of power equipment within 100 feet or more of colony.

Motion



Movement within 50 feet or more of the colony.

Potential AHB Colony Locations Around the Home

— KEEP BEES OUT —

Check your house and yard monthly for potential AHB colony locations. Have bees removed as soon as you are aware of them.

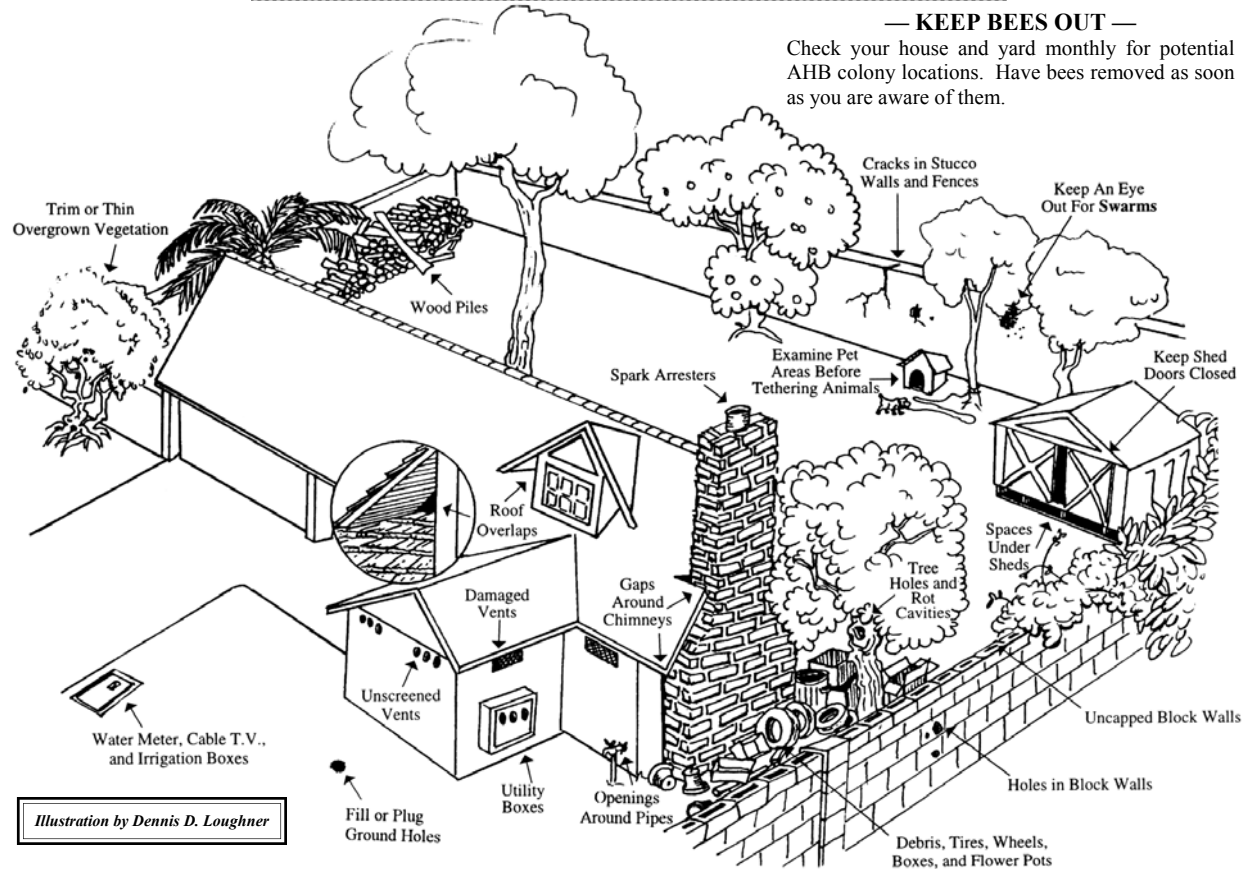


Illustration by Dennis D. Loughner

Important Differences Between AHBs and EHBs

Pursuit distance

AHBs will chase a person a longer distance than EHBs.

AHBs..... up to 1/4 mile (4 football fields)



EHBs..... 100 feet (1/3 of a football field)

Defensive reaction period

AHBs will remain agitated longer than EHBs after a colony is disturbed.

AHBs..... 8 or more hours before defensive reaction subsides.



EHBs..... Perhaps 1 or more hours before defensive reaction subsides completely.